

Smart-binder: Required Regular Maintenance, Checks, Lubrication and Cleaning

v 121222

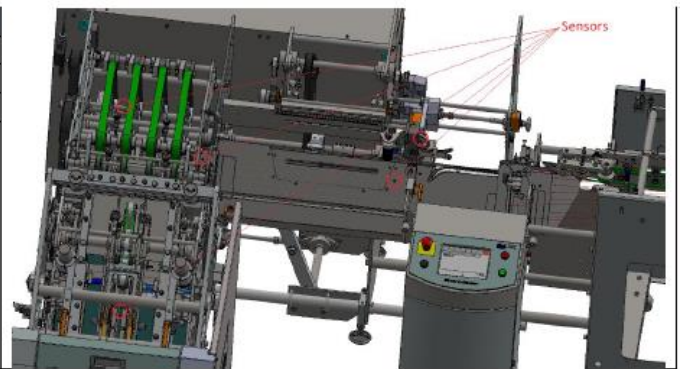
To maintain Smart-binder reliability the following routine Maintenance, Checks, Lubrication and Cleaning are required:

Every 16 hours of running

Item	Procedure
1	Lubricate stitching heads and felt pads on wire guides See, Hohner Stitching Head 52/8 S Manual
2	Clean any glue splatter or build-up from Collator area, wheel and transport area after

Every 200 hours of running

Item	Procedure
1	Clean all belts and rollers that contact, sheets and books.
2	Clean wire pieces and paper waste from clincher area.
3	Clean excess grease from trimmer bearings.
4	Using a light air blow, clear any dust build-up from optical sensors.



Cleaning belts and rollers

Use alcohol or similar cleaning fluid to clean infeed conveyor belt, green Polycord belts in folding area, folding nip roller rubber surface, green belts in trimmer transfer and any other belts, rollers or surfaces that contact paper and may be dirty and cause marking on sheets, covers and books.

Cleaning clincher area

When wire stitching, small pieces of paper, and sometimes pieces of stitcher wire, fall into the area beneath the clinchers. Periodically this should be cleaned out by removing the part of the saddle skirt over the clinchers (the clincher cover plate). Then use a vacuum cleaner to remove any paper and wire.

Cleaning excess grease from trimmer bearings

Small amounts of grease build up on the 6 columns in the trimmer. This is normal. To prevent this grease from getting on books, it should be cleaned off using a cloth.

Scheduled Maintenance

Every 1000 hours of running

Item	Procedure	Reference
1	Clean vacuum pump filters, and replace if damaged.	See Vacuum Pump Section
2	Check condition of trimmer knives. Knives must cut cleanly, trimmer should not stall when cutting thick books and there should be no visible damage to upper or lower knife edges. Replace with new / reground knives if necessary.	See Trimmer Knives Section
3	Check condition and tension of Polycord folding belts. If tension is low, shorten belts and re-weld to restore correct tension. If belts are worn or damaged, replace with new Polycord.	See Poly-cord Section
4	Check condition of stitcher shuttle gripper fingers. If rubber insert is damaged, worn or loose, replace with new.	See Assy-Stitcher, Smart Binder, sheet 4 to 8
5	Check condition of stitcher shuttle rollers. If rubber roller surface is badly worn, replace roller and check and correct gripper finger opening.	See Assy-Shuttle
6	Check and correct factory settings for gripper finger opening.	See Assy-Stitcher, Smart Binder, sheet 4 to 8
7	Check condition of trimmer front knife frontstop and tie wraps, and replace if damaged.	See Front Knife Paper Stops, Fitting Control Ties
8	Check condition of trimmer transfer belts, and replace if damaged or badly worn.	See Assy-Trimmer Transfer
9	Check condition of folder guide cables, and adjust or replace if loose or damaged.	See Assy-Sheet Conveyor
10	Lubricate trimmer bearings (6 positions).	See Trimmer Greasing Section
11	Check Timing, Tension and condition of the Upper Nip drive belts, before and after the quadrant gearbox	

Maintenance

Vacuum Pumps

Every 1,000 hours, clean and service of the Pile Feeder and Insert Feeder Pumps is required.

This involves cleaning the air filters and inspecting the vanes

[See Vacuum Pump Manual](#)

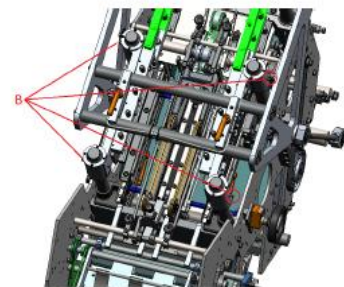
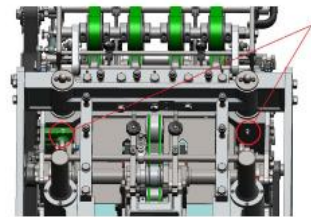


Greasing Trimmer Bearings

Every 1,000 hours, using the Grease Gun and Hose supplied in the Accessory Kit, apply 2 full pumps of grease into each trimmer bearing re-lubrication point.

2 positions at the front knife (A)

4 positions at the side knives (B)



Use General Purpose Lithium Grease NLGI No.1. (Part number 12002-000)

Every 4000 hours of running

Item	Procedure	Reference
1	Check vacuum pump filters and vanes. If any are below minimum acceptable width or are damaged, replace complete set of vanes.	See Vacuum Pump Section
2	Check condition of stitching heads and clinchers. Particularly check wire tubes, wire cutting knives, driver, clincher points and clincher driver. Replace any worn or damaged parts.	hohner Stitching-Head 52/8 S Manual
3	Check condition of sheet alignment conveyor registration belt. Replace belt if damaged or worn.	See Assy-Infeed Conveyor
4	Check condition of folding area nip rollers. If rubber surface is damaged or shows signs of wear, replace the rollers.	See Assy-Sheet Conveyor
5	Check all guard gas struts. Each guard should be able to be easily opened, stay open in its fully open position, close easily and stay firmly closed in its closed position. Both gas struts on each guard should apply equal pressure – otherwise the guard will feel as if it is twisting when opened or closed. There should be no visible damage to gas struts, either their rods or cylinders or end fittings. If any gas struts are not performing correctly or are damaged, they must be adjusted or replaced.	See Installation Manual See Assy-Guards, SB
6	Check Trimmer Guard Release Bar still functions correctly. Replace if defective.	See Installation Manual
7	Remove Trimmer Side Guards. Clean all paper and other debris from inside.	See Installation Manual
8	Check condition of all cam followers in stitcher and trimmer area. Clean all components of grease, paper or dust. Rollers should turn freely, without any play or visible damage. Any cam followers that do not run freely or are damaged must be replaced.	See Assy-Trimmer Book Transport